



## Log Book • Please read me.

This book has a total of 16 pages • Also available at [www.spasummerclassic.com/en/logbook.html](http://www.spasummerclassic.com/en/logbook.html)

- 1** Timetable of the 3-day meeting
- 2** Distribution of the races in the paddock (Map of the paddock)
- 3** When and how to reach the paddock ? **Correct procedure - 2 pages**
- 4** Signing on : Schedule & Licence requirements  Briefings  Results
- 5** Scrutineering : Schedule & Mandatory safety equipment  Noise regulations
- 6** Oil pollution prevention & Security Fire Instructions
- 7** Test day - Untimed open practice Thursday June 23 **Max 103 dB**



Whatever the car, drivers must meet the noise standards set by the circuit.  
The maximum sound level permitted is mentioned for each race in the timetable of the meeting.  
This is the maximum sound level per car, on the track (dynamic control), measured at 15m from the centreline of the track.  
If the noise limit is not respected, the car is stopped and a static control is carried out.  
However, should it be observed that the car exceeds on three consecutive occasions the maximum permitted during the dynamic control, it will be excluded from the meeting.



**Oil pollution prevention** • Every team must use a sheet of plastic or an oil drip tray under the racing car and under each truck to protect the ground against oil pollution. If the soil is oil stained, please use oil absorbent granules to clean before leaving the circuit.  
For every remaining oil stain a penalty of €250 is invoiced by the circuit management to the team.

Visit our web site to get more details : [www.spasummerclassic.com](http://www.spasummerclassic.com)



### TIMETABLE 2016 [issue #5 • dated 20/05/2016]

Friday June 24		Max dB on track		Race N°
09:05 - 09:30	25' Free Qualif.	105 dB	<b>NK HTGT</b> - Dutch Championship for Historic Touring and GT cars	6
09:45 - 10:10	25' Qualif. 1	108 dB	<b>Monoposto &amp; F3 Cup</b>	11
10:25 - 10:50	25' Free Qualif.	105 dB	<b>UPS4ALL</b> Youngtimer Touring Car Challenge & <b>GT Classic</b>	12
11:05 - 11:35	30' Qualif.	105 dB	<b>CSCC</b> Adams and Page <b>Swinging 60s</b> and <b>CSCC</b> Mintex <b>Classic K</b>	3
11:50 - 12:15	25' Qualif. 1	107 dB	<b>PCHC</b> - Porsche Club Historic Challenge	7
12:30 - 12:55	25' Qualif.	105 dB	<b>PCI</b> - NK GT's & Touring Cars '66-'81	8
13:10 - 13:40	30' Qualif.	107 dB	<b>Super 7 Inter Series</b>	10
13:55 - 14:25	30' Qualif.	107 dB	<b>Spa Ardennes Challenge</b>	5
14:40 - 15:10	30' Qualif.	107 dB	<b>L'équipe de France VH</b>	9
15:25 - 15:50	25' Qualif. 2	108 dB	<b>Monoposto &amp; F3 Cup</b>	11
16:05 - 16:35	30' Qualif.	105 dB	<b>Belgian Historic Cup</b>	2
16:50 - 17:20	30' Qualif.	105 dB	<b>CSCC Inter-Series Cup</b>	4
17:35 - 18:00	25' Qualif.	105 dB	<b>NK HTGT</b> - Dutch Championship for Historic Touring and GT cars	6
18:15 - 18:40	25' Qualif. 2	107 dB	<b>PCHC</b> - Porsche Club Historic Challenge	7
19:00 - 19:25	25' Qualif.	105 dB	<b>UPS4ALL</b> Youngtimer Touring Car Challenge & <b>GT Classic</b>	12
19:45 - 20:30	45' Qualif.	107 dB	<b>Spa 3 Hours</b>	1
<b>Saturday June 25</b>				
09:10 - 09:50	40' Race 1	107 dB	<b>Spa Ardennes Challenge</b>	5
10:10 - 10:35	25' Race 1	107 dB	<b>PCHC</b> - Porsche Club Historic Challenge	7
10:55 - 11:35	40' Race 1	105 dB	<b>CSCC Inter-Series Cup</b>	4
11:55 - 12:25	30' Race 1	105 dB	<b>UPS4ALL</b> Youngtimer Touring Car Challenge & <b>GT Classic</b>	12
12:45 - 13:10	25' Race 1	108 dB	<b>Monoposto &amp; F3 Cup</b>	11
13:30 - 13:55	25' Race 1	105 dB	<b>NK HTGT</b> - Dutch Championship for Historic Touring and GT cars	6
14:15 - 14:55	40' Race 1	105 dB	<b>CSCC</b> Adams and Page <b>Swinging 60s</b> and <b>CSCC</b> Mintex <b>Classic K</b>	3
15:15 - 15:45	30' Race 1	105 dB	<b>Belgian Historic Cup</b>	2
16:05 - 17:06	61' Race	107 dB	<b>L'équipe de France VH</b>	9
17:25 - 17:50	25' Race 1	105 dB	<b>PCI</b> - NK GT's & Touring Cars '66-'81	8
18:10 - 18:40	30' Race 1	107 dB	<b>Super 7 Inter Series</b>	10
18:55 - 21:55	180' Race	107 dB	<b>Spa 3 Hours</b>	1
<b>Sunday June 26</b>				
09:10 - 09:50	40' Race 2	105 dB	<b>CSCC</b> Adams and Page <b>Swinging 60s</b> and <b>CSCC</b> Mintex <b>Classic K</b>	3
10:10 - 10:35	25' Race 2	107 dB	<b>PCHC</b> - Porsche Club Historic Challenge	7
11:00 - 11:25	25' Race 2	105 dB	<b>NK HTGT</b> - Dutch Championship for Historic Touring and GT cars	6
11:45 - 12:10	25' Race 2	108 dB	<b>Monoposto &amp; F3 Cup</b>	11
12:30 - 13:00	30' Race 2	107 dB	<b>Super 7 Inter Series</b>	10
13:25 - 13:55	30' Race 2	105 dB	<b>UPS4ALL</b> Youngtimer Touring Car Challenge & <b>GT Classic</b>	12
14:20 - 15:00	40' Race 2	107 dB	<b>Spa Ardennes Challenge</b>	5
15:25 - 16:05	40' Race 2	105 dB	<b>CSCC Inter-Series Cup</b>	4
16:30 - 16:55	25' Race 2	105 dB	<b>PCI</b> - NK GT's & Touring Cars '66-'81	8
17:20 - 17:50	30' Race 2	105 dB	<b>Belgian Historic Cup</b>	2

E42  
A27  
Battice - Trèves (Trier)  
Sortie Exit 10  
Francorchamps

Spa Summer Classic

Spa Summer Classic 2016

June 24, 25, 26



[Provisional • Issue #2 • dated 24/05/2016] Map of the Paddock

Roadbook Organisation • spa@roadbook.be • www.spasummerclassic.com



CIRCUIT DE SPA  
FRANCORCHAMPS

Entrée Gratuite  
Free Admission  
Vrije Toegang  
Freier Eintritt



**ENTRANCE**  
"LA SOURCE" gate  
Parking P 14  
for drivers  
and teams

**P P 14**  
Parking  
for drivers  
and teams

**P P 14**  
Parking  
for drivers  
and teams

**P P 14**  
Parking  
for drivers  
and teams

**P** Parking  
Level -2  
Under F1  
Pit Building

**ENTRANCE**  
"STER" gate  
VISITORS

**P** Parking P2  
Visitors

**P** Parking P1  
Visitors

**Classic**  
CSCC  
Welcome Tent

**Distribution of the races in the paddock**

- Spa 3 Hours with Iberian Historic Endurance
- Monoposto & F3 Cup
- PCHC - Porsche Club Historic Challenge
- CSCC Swinging Sixties and Classic K
- CSCC Inter-Series Cup
- L'équipe de France VH
- CSCC - Spa Ardennes Challenge
- 24 - 46 Spa Ardennes Challenge with Crosslé
- 1 - 23 NK HTGT
- Belgian Historic Cup
- Super 7 Inter Series
- PCI - NK GT's & Touring Cars '66-'81
- UPS4ALL YTTC & GT Classic

**No private car in the paddock.**  
Free car park for drivers' and teams'  
private cars in parking P14

**ENTRANCE**  
"BLACHIMONT" gate

**Trucks - Mechanics**  
**Car-workshop**  
**Car + trailer**

E42  
A27  
Battice - Trèves (Trier)  
Exit 11 Stavelot

**For the races :****Race 1 : Spa 3 Hours****Race 2 : Belgian Historic Cup****Race 3 : CSCC Adams and Page Swinging 60s and CSCC Mintex Classic K****Race 4 : CSCC Inter-Series Cup****Race 5 : Spa Ardennes Challenge****Race 6 : NK HTGT - Dutch Championship for Historic Touring and GT cars****Race 7 : PCHC - Porsche Club Historic Challenge****Race 9 : L'équipe de France VH****Race 11 : Monoposto & F3 Cup**

- In due time, you will get from your promoter series an email with an “ Authorized Access Pass “ in PDF format.
- Print the PDF page and give it at the steward at the Blanchimont Gate (maximum 4m height permitted). On Motorway Verviers - St.Vith (E421-A27) --> Exit n°11 : Stavelot

When :

Wednesday June 22 : from 20:00 to 22:30

The teams arriving before 20:00 will be parked on standby in the overflow area.

Thursday June 23 : from 07:00 to 22:00

Friday June 24 : from 07:00 to 22:00

- In exchange for the PDF page, the steward will stick on the windscreen of your vehicle the correct sticker-pass, according to the function of your vehicle.
  - > Trucks, mobile workshops, mechanic vans : inside paddock
  - > Private car : parking P14
- When you have the sticker on your windscreen you are free to leave or enter the paddock or parking 24h/24h.

**For the race : Race 10 : Super 7 Inter Series**

- In due time, you will get from your promoter series an email with an “ Authorized Access Pass “ in PDF format.
- Print the PDF page and give it at the steward at the Blanchimont Gate (maximum 4m height permitted). On Motorway Verviers - St.Vith (E421-A27) --> Exit n°11 : Stavelot

When :

Wednesday June 22 : from 13:00 to 22:30

Thursday June 23 : from 07:00 to 22:00

Friday June 24 : from 07:00 to 22:00

- In exchange for the PDF page, the steward will stick on the windscreen of your vehicle the correct sticker-pass.
  - > Trucks, mobile workshops, mechanic vans and private cars will be in your own paddock.
- When you have the sticker on your windscreen you are free to leave or enter the paddock or parking 24h/24h.

For the races :

**Race 8 : NK GTTC - Dutch Historic Championship GT's & Touring Cars '66-'81**

**Race 12 : UPS4ALL Youngtimer Touring Car Challenge & GT Classic**

- In due time, you will get from your promoter series an email with an " Authorized Access Pass " in PDF format.
- Print the PDF page and give it at the steward at the Ster Gate to access the Shopping Center.  
On Motorway Verviers - St.Vith (E421-A27) --> Exit n°10 : Francorchamps

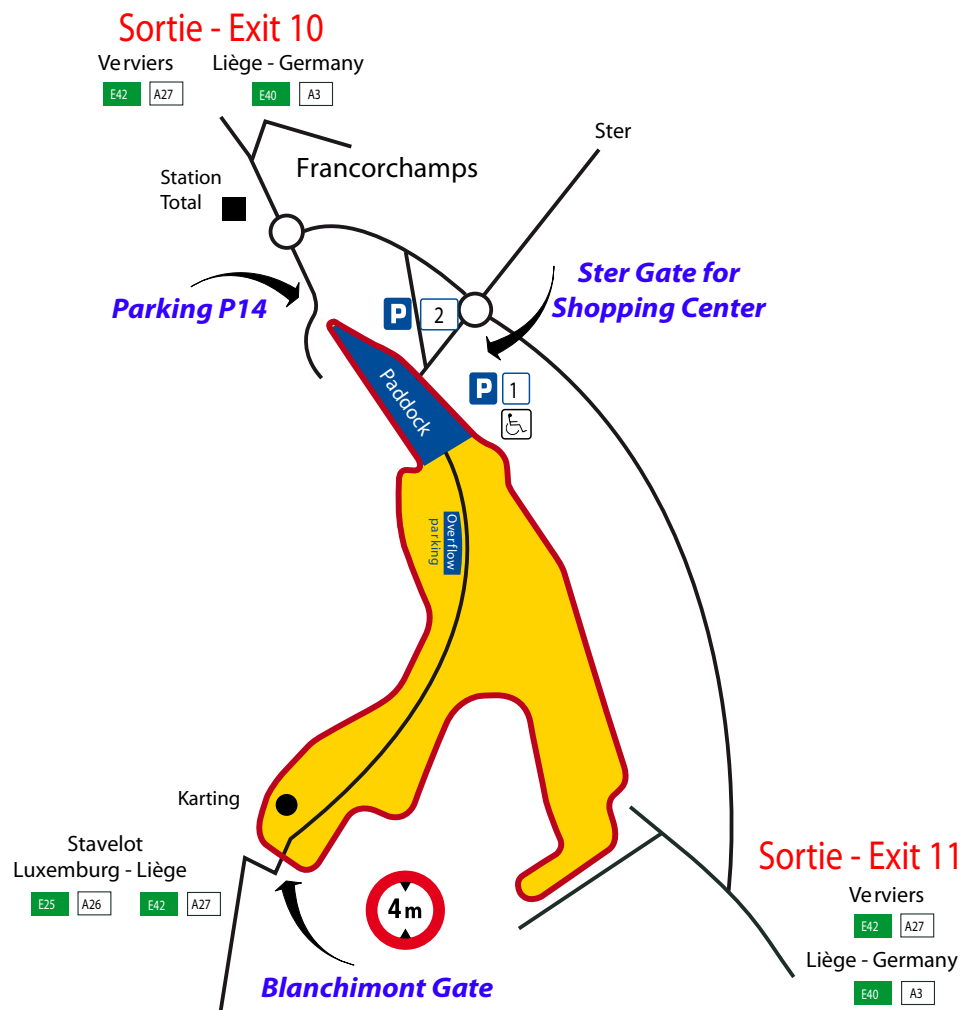
When :

Wednesday June 22 : from 13:00 to 22:30

Thursday June 23 : from 07:00 to 22:00

Friday June 24 : from 07:00 to 22:00

- In exchange for the PDF page, the steward will stick on the windscreen of your vehicle the correct sticker-pass.  
—> Trucks, mobile workshops, mechanic vans and private cars will be in your own paddock Shopping Center.
- When you have the sticker on your windscreen you are free to leave or enter the paddock or parking 24h/24h.



**Signing on (Sporting checks) & Licence requirements :**

- For all the drivers : 1st floor of the F1 Pit Building - Room 115
- Thursday June 23 : from 08:00 till 19:00  
and / or Friday June 24 : from 08:00 till 60 minutes before your qualifying practice
- Wristbands for the pitlane and track will be given to each team.
- Transponders will be recorded.  
Only AMB transponders will be used. If your car has no transponder or a Chronolec transpondeur, we will provide you free of charge with an AMB transponder in exchange for the licence of the driver.
- Minimum licence requirements : drivers entered regularly in a series must comply with the standards of licenses imposed by the series.

Licence from Belgium - RACB Sport :

National Historic H-Circuit or National Circuit C or International Historic H2 or International C

Licence from United Kingdom - RAC MSA :

Race National 'A' or Race International Historic or Race International

Licence from The Netherlands - KNAF :

EU/Nationaal licentie or Internationaal licentie

Licence from France - FFSA :

Nationale Concurrent Conducteur Auto, with a letter of authorization from the ASN or Internationale Concurrent Conducteur "C" Auto

Licence from any other european country :

National A degree (or equivalent) with a letter of authorization from the ASN or International for racetrack

Licence from a non-european country :

International degree for racetrack with a letter of authorization from the ASN

For the race 7 • PCHC - Porsche Club Historic Challenge :

International C (or International Historic if available from the ASN)

**Briefing : schedule**

	<b>Friday 24</b>	<b>Location</b>
Spa 3 Hours	17:00	1st floor Pit Building - Room 132  <b>It is compulsory for all the drivers to attend the briefing.</b>
Belgian Historic Cup	14:45	
CSCC Swinging 60s and Classic K	09:45	
CSCC Inter-Series Cup	09:45	
Spa Ardennes Challenge	12:45	
NK HTGT	15:45	
PCHC - Porsche Club Historic Challenge	10:30	
NK GTTC	11:15	
L'équipe de France VH	13:30	
Super 7 Inter Series	12:00	
Monoposto & F3 Cup	08:30	
UPS4ALL YTCC & GT Classic	16:15	

Briefing instructions will be given at signing on.

Briefing procedures will be available on our web site a few days before the meeting :

[www.spasummerclassic.com/en/regulations.html](http://www.spasummerclassic.com/en/regulations.html)

**Results** will be available in the Room 115 during all the meeting and on our website :

[www.spasummerclassic.com/en/index.html](http://www.spasummerclassic.com/en/index.html)

### Schedule and procedures

At the signing on (check of the licence), you will get your personal scrutineering form for your car as well as the practical details to reach the technical area.

Schedule of the scrutineering	Thursday 23	Friday 24
1. Spa 3 Hours	13:00 - 18:00	11:00 - 16:30
2. Belgian Historic Cup	-	09:00 - 15:00
3. CSCC Swinging 60s and Classic K	09:00 - 18:00	(*) 08:30 - 10:15
4. CSCC Inter-Series Cup	09:00 - 18:00	09:00 - 14:00
5. Spa Ardennes Challenge	13:00 - 18:00	09:00 - 12:00
6. NK HTGT	09:00 - 18:00	(*) 08:00 - 08:30
7. PCHC - Porsche Club	09:00 - 18:00	08:30 - 11:00
8. NK GTTC	13:00 - 18:00	09:00 - 11:30
9. L'équipe de France VH	13:00 - 18:00	09:00 - 13:00
10. Super 7 Inter Series	13:00 - 18:00	09:00 - 12:00
11. Monoposto & F3 Cup	09:00 - 18:00	(*) 08:30 - 09:15
12. UPS4ALL YTCC & GT Classic	09:00 - 18:00	(*) 08:30 - 10:00

(\*) only for teams prevented from arriving on Thursday and who have informed us about their late arrival on Thursday evening after the closing time for scrutineering.

Send us an email to [spa@roadbook.be](mailto:spa@roadbook.be)

### Mandatory safety equipment

RACB Sport would like to remind what is the minimum equipment required to compete in Belgium, in order to avoid drivers being forced to buy new stuff on site or, at the worst being prevented from racing.

See the 6 following pages.

## Noise regulations



Whatever the car, drivers must meet the noise standards set by the circuit.

The maximum sound level permitted is mentioned for each race in the timetable of the meeting.

This is the maximum sound level per car, on the track (dynamic control), measured at 15m from the centreline of the track.

If the noise limit is not respected, the car is stopped and a static control is carried out.

However, should it be observed that the car exceeds on three consecutive occasions the maximum permitted during the dynamic control, it will be excluded from the meeting.

**DATE:** Monday, January 04<sup>h</sup> 2016

**OBJET: Safety equipment of historic cars competing in Belgium**

RACB Sport would like to remind what is the minimum equipment required to compete in Belgium, in order to avoid drivers being forced to buy new stuff on site or, at the worst being prevented from racing, what nobody likes to see.

Here are the main FIA safety rules for cars following Appendix K:

**Driver equipment :**

- Racing suit - **FIA Standard 8856-2000**  
(FIA Technical list N°27)  
(Embroidered on the backside of the collar)

Ex :

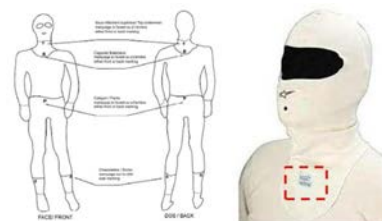


RS.095.05 RS.095.02	2NV	GA	17.08.05
RS.096.05	S-2	IMPACT	24.08.05
RS.169.09 RS.0169.09	JADE / JADE TOP	LICO	21.01.09
RS.218.12	PRO-POWER-3	POWER-ON RAGEWEAR	26.09.12
RS.226.12	ZEAL RACESUIT	ZEAL	30.11.12

- Shoes, gloves - **FIA Standard 8856-2000.** Ex :  
(FIA Technical list N°27)



- Underwear, balaclava (FIA Technical list N°27)  
**FIA Standard 8856-2000.** Ex :







FIA homologated helmet: (FIA Technical List N°33 et 41)

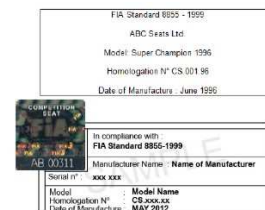
STANDARD DESIGNATION	LABEL EXAMPLE	Recognised to be used with FHR <sup>1</sup>	Recognised to be used without FHR
<ul style="list-style-type: none"> <li>FIA 8860-2010 Fédération Internationale de l'Automobile 8, Place de la Concorde 75008 Paris France <a href="http://www.fia.com">www.fia.com</a></li> </ul>		YES	YES
<ul style="list-style-type: none"> <li>FIA 8860-2004 <b>NOT VALID AFTER 31.12.2020</b></li> </ul>		YES	YES
<ul style="list-style-type: none"> <li>FIA 8859-2015</li> </ul>		YES	YES
<ul style="list-style-type: none"> <li>Snell 2005 or 2010 + FIA 8858-2002</li> </ul>		YES	YES
<ul style="list-style-type: none"> <li>Snell 2005 or 2010 + FIA 8858-2010</li> </ul>		YES	YES

STANDARD DESIGNATION	LABEL EXAMPLE	Recognised to be used with FHR <sup>1</sup>	Recognised to be used without FHR
<ul style="list-style-type: none"> <li>Snell SA 2015 Snell Memorial Foundation 3628 Madison Avenue, Suite 11 North Highlands, CA 95660 USA <a href="http://www.smf.org">www.smf.org</a> <b>NOT VALID AFTER 31.12.2023</b></li> </ul>		NO	YES
<ul style="list-style-type: none"> <li>Snell SAH 2010</li> <li>Snell SA 2010 <b>NOT VALID AFTER 31.12.2023</b></li> </ul>		NO	YES
<ul style="list-style-type: none"> <li>Snell SA 2005 <b>NOT VALID AFTER 31.12.2018</b></li> </ul>		NO	YES
<ul style="list-style-type: none"> <li>SFI 31.1</li> <li>SFI 31.1A</li> <li>SFI 31.2A SFI Foundation Inc 15708 Pomerado Road, Suite N208 Poway, CA 92064 USA <a href="http://www.sffoundation.com">www.sffoundation.com</a> <b>NOT VALID AFTER 31.12.2018</b></li> </ul>		NO	YES

## Car equipment :

- Safety harness (If required by regulation), **Ex :**  
 FIA Homologated and less than 5 year old.  
 (FIA Technical list N°24)  
 (Single seater and sports car must use 5 or 6 points belts.)

- Racing seat, if original seats are changed it must be for seat system for which the FIA Homologation is valid. (FIA Technical list N° 12 and 39)



## FIA Standard 8855-1999 (valid 5 years)

(FIA Technical list N° 12)

**NON VALABLE APRÈS LE 31.12.2016  
NOT VALID AFTER 31.12.2016**

**NOUVELLE ETIQUETTE EN VIGUEUR A  
COMPTER DU 01.01.2012 JUSQU'AU 31.12.2013  
NEW LABEL IN EFFECT FROM 01.01.2012  
UNTIL 31.12.2013**

**NOUVELLE ETIQUETTE EN VIGUEUR A  
COMPTER DU 01.01.2014  
NEW LABEL IN EFFECT AS OF 01.01.2014**

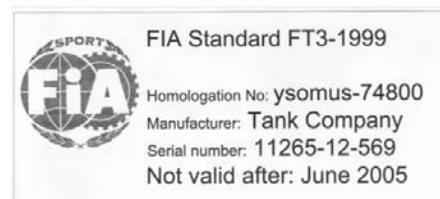
CS.912-98	<b>KINGDRAGON S.p.A.</b>	Master VTR	06-98
CS.972-99	<b>EKTOR</b>	RUNNER-2000	06-99
CS.980-99	<b>COBRA SEATS</b>	Monaco	06-99
CS.992-00	<b>CORBEAU</b>	Forza	01-00
CS.993-00	<b>CORBEAU</b>	Pro-series	01-00
CS.994-00	<b>CORBEAU</b>	Revolution	01-00
CS.997-00	<b>RECARO GMBH&amp;CO</b>	Pole-position	01-00
CS.053-02	<b>CORBEAU</b>	Sprint	01-02
CS.057-02	<b>BIMARCO</b>	EXPERT	07-02
CS.133-05	<b>ROSSI SPORT</b>	Professional II	01-05
CS.142-05	<b>ROSSI SPORT</b>	Professional III	09-05
CS.159-06	<b>GP-RACE</b>	TOP RALLY	03-06
CS.195-07	<b>NICK COMPETICION</b>	EFE-UNO	04-07
CS.207-08	<b>GP-RACE</b>	TOP CIRCUIT	03-08
CS.208-08	<b>GP-RACE</b>	TOP RALLY LIGHT	03-08



- Circuit breaker controlled easily from inside by the driver seated.
- Metal tow ring or towing strap, front and rear, indicated with a contrasting color arrow on the body (not for single-seat cars).
- A red rain light is mandatory, mounted less than 10 cm from the car center-line of the back of the car. The light must be either incandescent and of a power of at least 21 Watts, or of LED type. (FIA Technical list N° 19)

- The fuel tank must be filled with safety foam.  
(Other than original)

In case of a safety fuel tank (FT3 & FT3.5) is required or installed it must be within the validity of homologation (Appendix J Art. 253.14).

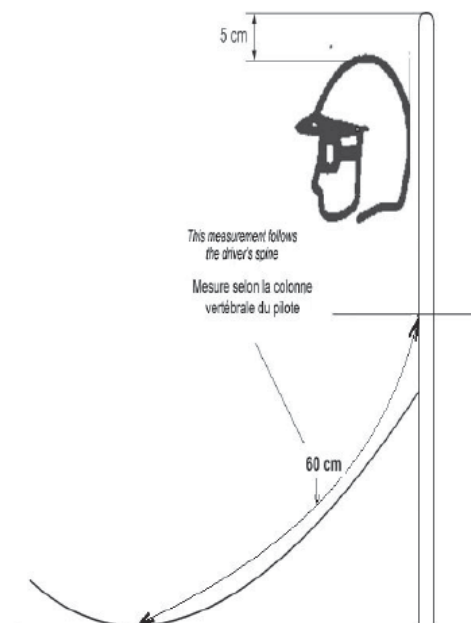


- The ROPS (Roll Over Protection Structure) must conform to appendix K.  
(FIA Technical list N° 23)

It must be padded with FIA 8857-2001 type A approved foam where driver helmet could come in contact with the ROPS.



The structure in all open cars must be a minimum of 5 cm above the top of the driver's and co-drivers helmets at all times.



- Two rear-view mirrors must be fitted, with min. total glass area of 90 cm<sup>2</sup>.

## FHR wearing : (Frontal Head Restraint)

The proof of “period specification” is always to be provided by the competitor.

- Is mandatory for the F1 from period G (from 01/01/1968).
- Is more than recommended for Young Timer (period J1 & J2 from 01/01/1982)
- Frontal Head Restraint [FHR system] will probably be mandatory in the coming years for all cars Old Timer as Young Timer.

8858-2002  
8858-2010



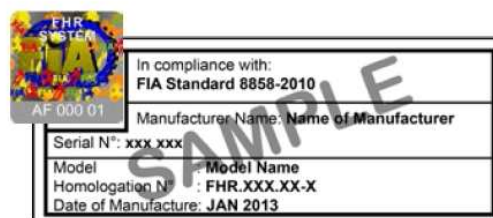
8558-2010



**ETIQUETTE APPOSEE SUR LES SYSTEMES  
RFT FABRIQUES AVANT LE 01.01.2013  
LABEL USED ON FHR SYSTEMS  
MANUFACTURED BEFORE 01.01.2013**



**NOUVELLE ETIQUETTE EN VIGUEUR A  
COMPTER DU 01.01.2013  
NEW LABEL IN EFFECT AS FROM 01.01.2013**



- When buying new harness pay attention that some harness can only be used with the Frontal Head Restraint system. (FHR only)
- When buying new equipment, always check carefully that this equipment has the latest homologation. (FIA ISO6940, FIA-1986, ...)

# 6

## Oil pollution prevention & Security Fire Instructions

### Oil pollution prevention

Every team must use a sheet of plastic or an oil drip tray **under the racing car and under each truck** to protect the ground against oil pollution. If the soil is oil stained, please use oil absorbent granules to clean before leaving the circuit.

For every remaining oil stain a penalty of €250 is invoiced by the circuit management to the team.



### Security Fire Instructions

See the page published by the Regional Fire Department of the town of Stavelot : *Security Fire Instructions*

*Spa*  
*Summer Classic*

---

## Fuel Safety Rules

---

No smoking 

---

Fire extinguisher ready 

---

Metal jerry cans ONLY  
(on the ground prior to filling) 

---

Securely tied for transportation 



## PRESCRIPTIONS SECURITE CONTRE L'INCENDIE



## SECURITY FIRE INSTRUCTIONS

### 1. PRESCRIPTIONS PADDOCKS

#### a) Transport et transvasement des matières inflammables

- la quantité totale transportée ne peut dépasser 240 litres par unité de transport
- récipients métalliques d'une capacité maximale de 60 litres et solidement arrimés
- présence obligatoire d'un accompagnant équipé d'un extincteur (6 kg poudre ou 6 l. mousse)
- pas d'éléments combustibles à proximité de l'hydrocarbure transporté (p.ex. pneus)
- interdiction de fumer, de produire du feu; s'éloigner des objets en ignition, étincelles, soudures ...
- les récipients vides ou pleins seront toujours fermés
- le transport se fera dans un véhicule utilitaire conçu pour le chargement
- une bonne connexion électrique entre le récipient métallique et la terre avant le remplissage ou la vidange de ce dernier; lors de ces opérations les récipients seront préalablement déchargés du véhicule
- il est interdit de pénétrer dans la partie chargement d'un véhicule couvert transportant des liquides inflammables avec des appareils d'éclairages portatifs autres que ceux qui sont conçus et construits de façon à ne pouvoir enflammer les vapeurs inflammables qui auraient pu se répandre à l'intérieur

Si le transport se fait par attelage:

- le véhicule tracteur doit être à même de tracter et freiner la charge
- les bandages de la remorque seront adaptés au type de sol rencontré ainsi qu'aux vitesses atteintes par le véhicule tracteur
- le crochet d'attelage et l'attache remorque seront approuvés CE
- une chaîne ou un câble de sécurité solidaire au timon de la remorque reliera le crochet d'attelage
- chaque fût sera arrimé individuellement
- un commissaire technique ou un juge de faits sera présent durant le temps d'ouverture des pompes pour contrôler le respect de ces règles de sécurité et sanctionner en cas de non respect

#### b) Manipulation de fuel dans le stand

Pompes à Pompes à main ou ou électriques antidéflagrantes – PAS de batteries.

Présence obligatoire d'un surveillant équipé d'un extincteur et situé à 2 mètres du refueling.

Stabilité et mise à la terre des tours de ravitaillement.

Présence obligatoire de produit minéral absorbant dans le stand – Jamais d'eau.

Présence obligatoire de 2 extincteurs dans chaque stand (1 provenant du team et 1 du circuit)

N.B. : Extincteur autorisé : 6 kg poudre ou 6 litres mousse. Vêtements anti-feu pour les personnes situées à moins de 2 mètres.

#### c) Interdiction de fumer ou de flamme nue

Dans toute la zone ceinturant la station-service.

Pendant toute la durée du transport de fuel à travers les paddocks.

Dans la pitlane, dans les stands et à moins de 5 mètres à l'arrière des stands.

Au-dessus des stands (loges, mezzanines).

N.B. : Exemple de flamme nue : réchaud au gaz, barbecue au charbon de bois, production d'étincelles, brûleur au mazout ou au gaz pour tente à pneus, soudure, etc.

#### d) Interdiction de bonbonne L.P.G.

Dans la pitlane, dans les stands et à moins de 5 mètres de l'arrière des stands.

Dans aucun véhicule (autorisé dans les chapiteaux et sous auvents).

Interdiction d'occuper les dégagements

Tous les dégagements routiers des paddocks.

Le dégagement de 1 mètre de largeur derrière les stands.

N.B. : Autorisé derrière les stands : plateau arrière de camion si abaissé banderoles délimitant le stand si aisément franchissables.

#### f) Conformité des installations électriques ou de gaz

Obligation de respect des normes.

Protection des lignes électriques ou conduites de gaz.

### 1. REGULATIONS IN THE PADDOCKS

#### a) Transport and transfer of the inflammable materials

- the transported total quantity cannot exceed 240 litres per unit of transport
- metal containers with a maximum capacity of 60 liters and firmly fastened
- obligatory presence of one accompanying equipped with an extinguisher (6 kg powder or 6 l. mousse)
- no combustible matter near the transported hydrocarbon (i.e. tires)
- prohibition to smoke, produce fire; s' to move away from the objects in ignition, sparks, weldings...
- the empty or full containers will be always closed
- transport will be done in a commercial vehicle designed for the loading
- a good electric connection between the metal container and the ground before the filling or draining of this last; at the time of these operations the containers will be discharged beforehand from the vehicle
- it is interdict to penetrate in the part loading of a transporting covered vehicle of the flammable liquids with apparatuses with portable lightings others that those which are conceived and built in order to be able to ignite the flammable vapors which could have been spread inside

If transport is done by attachment:

- the towing vehicle must be capable to tractor draw and brake the load
- bindings of the trailer will be adapted to the type of ground thus met at the speeds reached by the towing vehicle
- the hook attachment and trailer attaches will be approved EC
- a chain or a cable of safety interdependent to the tiller of the trailer will connect the hook attachment
- each barrel will be fastened individually
- a technical police chief or a judge of facts will be present during time opening of the pumps to control the compliance with these safety regulations and to sanction in the event of nonrespect

#### b) Manipulating fuel in the pits

Hand-driven or pneumatic pumps or spark proof electric pumps, NO batteries

The presence of a supervisor equipped with fireproof clothing, a fire extinguisher and positioned at 2 meters from the refuelling tower is compulsory.

N.B.: authorised fire extinguisher: minimum 6 kg (powder) or 6 litres (foam).

Fireproof clothing for persons located at a distance of less than 2 meters, in accordance with point 17 of appendix H of the International Sporting Code. Stability and grounding of the refuelling towers:

N.B. : Stability should be ensured by ground blocks and NOT by straps.

It is compulsory to have mineral absorbent product in the pit – Never water

Compulsory presence of 2 fire extinguishers in the pit (1 belonging to the team, and one from the track)

#### c) Strictly forbidden to smoke or to use naked flames

In the whole area surrounding the petrol station.

During the duration of the fuel transport through the paddocks

In the pit lane, in the pits and at a distance of less than 5 meters of the back of the pits.

Above the pits (boxes, mezzanine).

N.B. : Examples of naked flame : camping stove, charcoal

barbecue, anything producing sparks, gas or petrol burner for tyre tents, soldering, etc.

#### d) LPG gas cylinders are strictly forbidden

In the pit lane, the pit areas and, at a distance of less than 5 meters from the back of the pit areas.

In vehicles (authorised in the marquees and awnings)

#### e) Strictly forbidden to occupy clearings

Any of the roads cleared by paddocks

The 1 meter large clearance behind the pit area

N.B. : Authorized behind the pit areas : truck (back) mounting plate if lowered, banners demarcating the stand if easy to cross.

#### f) Compliance of electric wiring and gas installations

It is compulsory to respect the security regulations

Protection of the electric lines or gas pipelines.

Lt. Guy CLOSE  
Chef de Corps f.f.

Lt. Guy CLOSE  
Chef de Corps f.f.

**Conviviality**

Thursday June 23 is a test day (untimed open practice) open only to cars and drivers taking part in one of the races of the meeting.

This is not a racing day. Please keep in mind the convivial atmosphere and mutual respect among all participants.

The track's safety service and marshals will be present to ensure this policy is observed.

**Respect of noise limit**

Users of the track will meet the noise standards set by the circuit.

A **static** control will be done before the car takes to the track of the circuit. **Maximum permitted : 107 dB**

stationary car in neutral gear, microphone placed at a distance of one metre from the exhaust pipe at a 45° angle, with the engine running at 75 % maximum authorised rpm.

If noise limit is not respected, access to the track is not permitted for the car. The car is authorised to take a second inspection.

**A dynamic control is done during each lap of the circuit. Maximum permitted : 103 dB**

If noise limit is not respected, the car is stopped and a static control is carried out.

If the car meets the required standards during the static control, it will be authorised to return to the track.

However, should it be observed that the car exceeds, on three consecutive occasions, the maximum permitted during the dynamic control, it will be excluded from the activity.

Scrutineering of the car is not necessary.

**Whatever the car, the group or the session, users of the track will meet the noise standards set by the circuit.**

**Groups & Sessions**

Cars will be divided into 2 groups.

**Group A**

= **all cars** except Monoposto & F3 Cup

**Groupe B**

= **Monoposto & F3 Cup only**

**Sessions :**

<b>Session 1</b>	<b>09:05 - 09:55</b>	<b>Group A</b>
<b>Session 2</b>	<b>10:05 - 10:55</b>	<b>Group A</b>
<b>Session 3</b>	<b>11:05 - 11:55</b>	<b>Group A</b>
<b>Session 4</b>	<b>13:00 - 13:30</b>	<b>Group B</b>
<b>Session 5</b>	<b>13:40 - 14:30</b>	<b>Group A</b>
<b>Session 6</b>	<b>14:35 - 15:25</b>	<b>Group A</b>
<b>Session 7</b>	<b>15:30 - 16:20</b>	<b>Group A</b>
<b>Session 8</b>	<b>16:25 - 16:55</b>	<b>Group B</b>
<b>Session 9</b>	<b>17:05 - 17:55</b>	<b>Group A</b>

**Entry fee**

**Group A : 180 euros per session**

**Group B : 100 euros per session**

70 cars per session. No booking. Payment only in cash at registration on the circuit on a first-come, first-served basis.

Go to the signing on (1st floor of the F1 Pit Building - Room 115) on Thursday in the morning (opening at 8:00 am) to get your ticket(s) per session.

No passenger and no instructor. Only the driver alone in the car.

**Sanctions**

Any infringement of the instructions by a driver, any dangerous behaviour, or any excess of noise, will be penalised by the exclusion of the driver and the vehicle from the meeting (Friday - Saturday - Sunday).